



23/24 EXPERIENCE WINTER IN THE MURTAL

SIGHTSEEING IN THE MURTAL

FEEL YOUR HEART BEAT...

**TOP
DISCOUNTS**
WITH THE
GÄSTECARD



MURTAL.AT





WELCOME TO THE MURTAL REGION

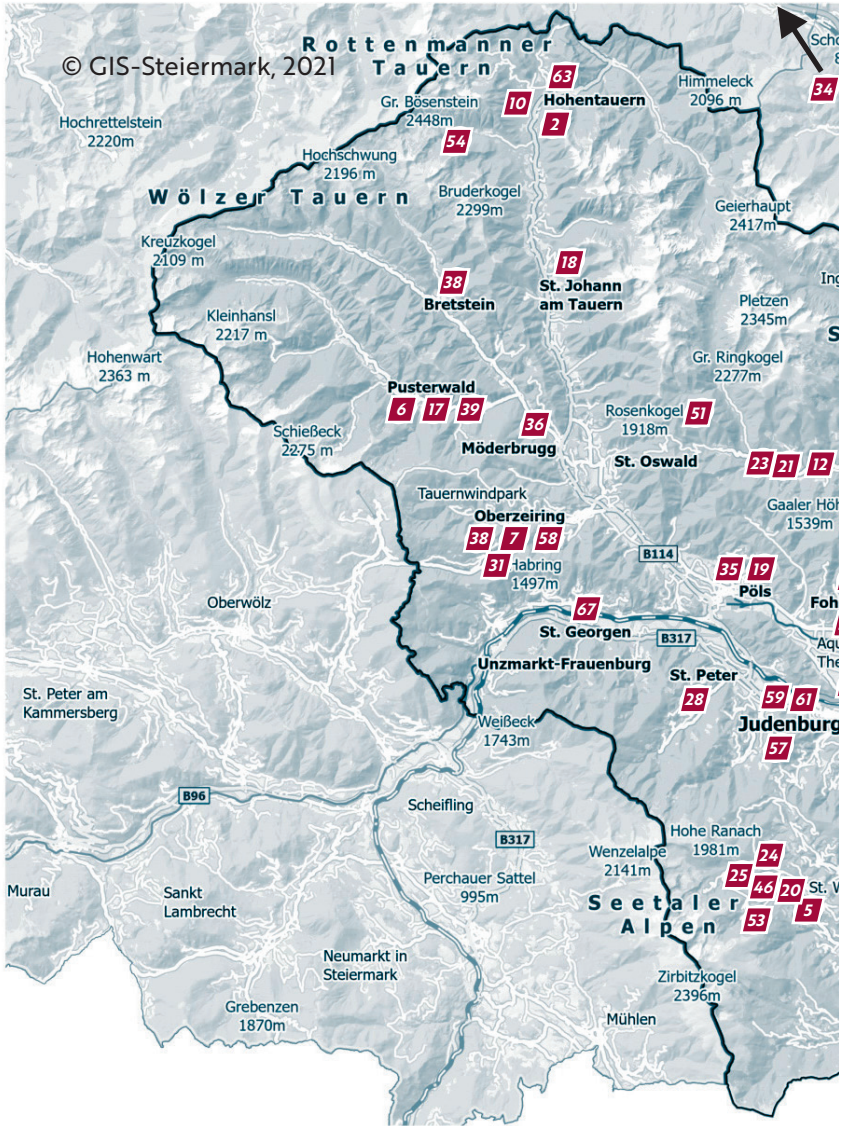
In the heart of Styria, the Murtal offers an incredibly diverse array of leisure activities. You'll also find an idyllic natural wonderland with mountains that even beginners strapping on their first pair of snowshoes or touring skis can enjoy. And let's not forget the numerous excursion destinations: from museums and the Red Bull Ring through to cultural highlights such as the Benedictine abbey in Seckau.



THE MURTAL GÄSTECARD

Get your GästeCard from your host on your very first night. The GästeCard entitles you to discounts on many different attractions across the Murtal Region, helping you save your holiday money! All information about discounts is included in the brochure.



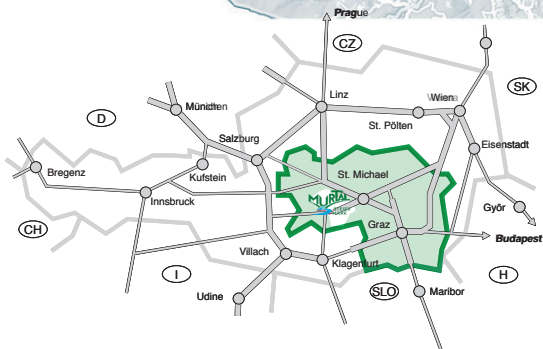
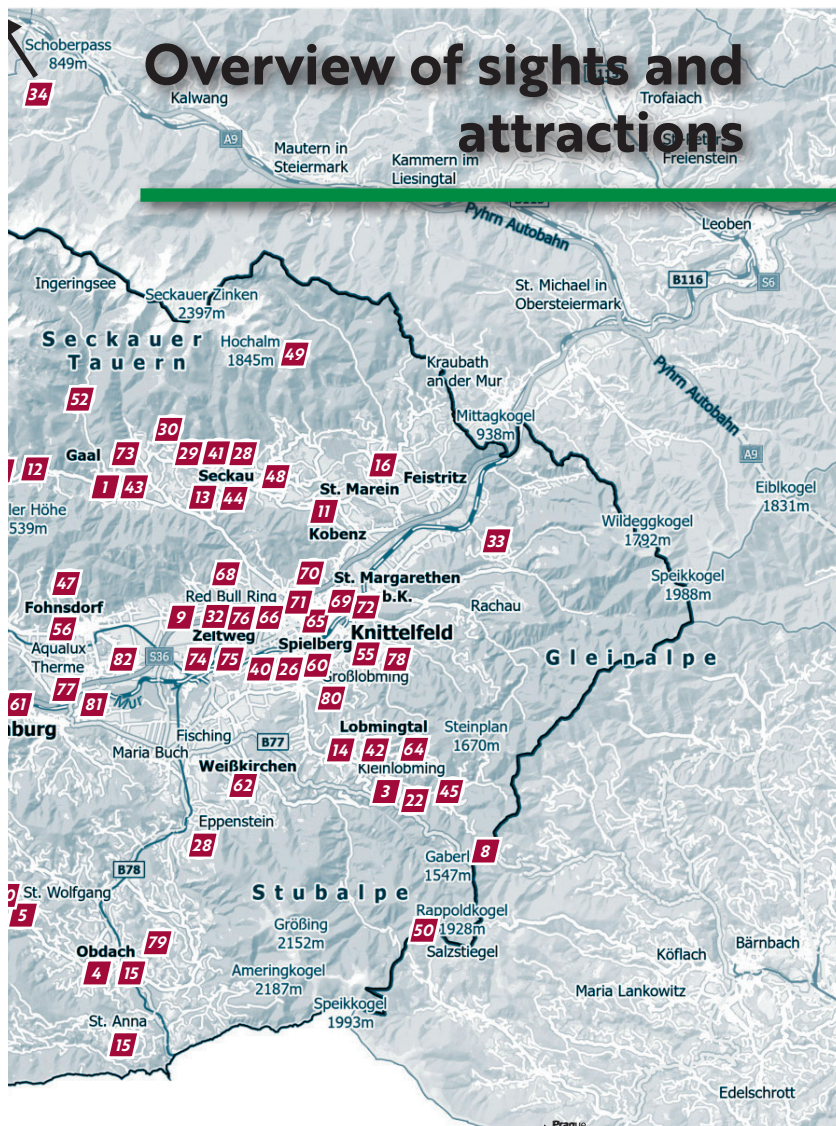


Erlebnisregion Murtal

Red Bull Ring Straße 1
8724 Spielberg
tel.: +43 3577 26600
info@murtal.at
www.murtal.at

Legal notice: Tourismusverband Murtal, Red Bull Ring Straße 1, 8724 Spielberg.
Texts & photos: TV Murtal, Red Bull Ring, Anita Fössl, Tom Lamm, Michael Jurtin,
Peter Eberhard, Weges, Dietmar Rauter. No liability is accepted for any errors. Last
updated: September 2023

Overview of sights and attractions



SKIING



Skiing in the Murtal is synonymous with getting away from it all. Here you'll find something for every member of the family. In the Murtal, never-ending queues at the ski lift are virtually unheard of. Refuel at the mountain restaurants in peace, with no stress or rushing around. Experience the elation of zig-zagging down the slopes, then make your way back up to the top in relaxed fashion. The focus here is on family bonding and spending time together. "Small but mighty" is the ski region's slogan. So it's no surprise to discover that FIS Alpine World Ski Cup races are held here every year. There are a number of black runs to put you to the test, giving you a real adrenalin rush. For beginners, there are plenty of opportunities to practise your first few turns and discover the joy of skiing.

www.murtal.at/skifahren



GAALER LIFTE

1

Opening times: 2 December 2023 to 17 March 2024

Daily from 9 a.m. to 4 p.m.

Night-time skiing 26 to 29. December & 2 to 5 January 7 p.m. to 9 p.m.

- then every Thursday 11.1.-22.2. from 9 a.m. to 6 p.m. and every Friday 12.1.-23.2. from 7 p.m. to 9 p.m.



Guaranteed snow, perfectly prepared slopes, top sports items for hire and friendly ski instructors ensure that you and your family will have a wonderful day's skiing at Gaal. Check out the ski "autobahn", the fun slope with XXL steep bends, or, for the little ones, the Ski GaalaXie with covered magic carpet.

Schattenberg 49, 8731 Gaal, tel.: +43 3513 88366
www.gaalerlifte.at

SKI HOHENTAUERN

2

Opening times: 16 December 2023 to 17 March 2024

Open daily: 9.15 a.m. to 4 p.m.

10 % off the daily price

Enjoy the feeling of gliding over the snow and see what the best of skiing is all about. Ski Hohentauern is a real insider's tip among skiers wishing to enjoy unspoiled nature in a family-friendly atmosphere. Small but perfectly formed: Ski Hohentauern offers 11 km of excellently groomed slopes at an altitude of 1,250-1,800 m above sea level.

Tauernstraße 39c, 8785 Hohentauern, tel.: +43 3618 289
Tel.: +43 664 3459770, www.ski-hohentauern.at

SKILIFTE KLEINLOBMING

3

Opening times:

Monday to Sunday from 9 a.m. to 4 p.m.

Admission: Please see website**10 % off the admission price**

Hit the slopes! Skiing doesn't always have to involve a long journey to get there, or very expensive prices. Right outside our door, the Skiarena Kleinlobming is a versatile resort with excellently prepared slopes, special offers for the whole family, and affordable night-time skiing prices. Nestled amidst the beautiful natural scenery of the Lobmingtal valley, at the foot of the Stubalpe mountains, the Skiarena Kleinlobming has everything you could possibly want for a day's skiing with the family. The pristine, well-maintained slopes are suitable for beginners and children. Plus, the modern new snow-making system ensures snow throughout the whole season. Experience the special thrill that night-time skiing brings on a brightly lit piste. There's also a "baby lift" located in a sunny spot, where the little ones can play about in the snow, learning how to ski through play, or simply having fun.

Liftstraße 25, 8734 Lobmingtal, tel.: +43 676 847637400
www.lobmingtal.at

SKIING

4 SCHILIFT OBDACH

Opening times:

Daily from 9.00 a.m. to 4 p.m.
All prices can be found on the website.

10 % off the week pass!



Welcome to skiing heaven! Idyllic slopes in the heart of Obdach. A T-bar lift, two snowy descents for both beginners and pros. Free magic carpet for the youngsters. Plus, the perfect place for refreshments is situated right by the lift. Winter like it used to be...

Liftstraße 6, 8742 Obdach, tel.: +43 3578 2430
www.schilift-obdach.at

5 RIESERALM FAMILY SKI AREA

Opening times:

Daily from 9 a.m. to 4 p.m.

!! NEW BERGaufRodeln and children's land !!

10 % off the 6-day pass!



Up on the Rieseralm, family skiing fun is just around the corner. Young and old alike will enjoy the 5 T-bar lifts dotted across 12 km of slopes, not to mention the children's adventure land with lift, mogul skiing, fun park and ski hire. The Stocker family is also on hand to provide some delicious refreshments.

Granitzen 31, 8742 Obdach, tel.: +43 3578 8215
www.rieseralm.at

6 SKILIFT PUSTERWALD

The ski lift opens depending on snow conditions. Saturday, Sunday and public holidays 9 a.m. to 2 p.m.

Pusterwald 51, 8764 Pusterwald, tel.: +43 3574 2205
www.pusterwald.at

7 KINDERSCHILIFT PÖLSTAL

The ski lift opens depending on snow conditions. Tuesday, Thursday, Friday 1 p.m. to 4 p.m., Saturday, Sunday 9 a.m. to 4 p.m., in the holidays daily 9 a.m. to 4 p.m.

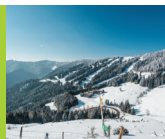
Hauptstraße 27, 8762 Pölstal/Oberzeiring, tel.: +43 664 5792529

8 FAMILY SKI AREA GABERL

Opening times: 8.12.23-17.3.24 daily 9-16 Uhr

prices: Daily pass kids up to 16 Jahre € 7,-, daily pass adults € 33,- (The ticket included parking fee € 3,- and trail fee € 7,-)

10% off the daily ticket



Sunny skiing fun at an altitude of 1.551 m is offered by the family skiing area of Gaberl on the Stubalm. From the „blue“ family run to the „black“ steep slope and untracked ski routes, the Gaberl offers everything for an unforgettable winter day. Cross-country skiing on the Gaberl high-altitude trail to the old alps hut. Daily fee 7 euros (incl. parking fee)

Gaberl 4, 8592 Maria Lankowitz, tel.: +43 3147 21037
schilifte@gaberl.at, www.gaberl.at

CROSS- COUNTRY SKIING



www.murtal.at/langlaufen

Feel your heart beat once again as you go cross-country skiing in the Erlebnisregion Murtal. Make your own tracks through the region on classic skis or go hell for leather on skates. Reach closer to the sky as you improve your endurance in the mountains of Hohentauern and the Stubalpe. Enjoy a sporty pace on the track at the stadium in Zeltweg. Floodlights are switched on in the evening, so you can keep training. Stress and the thought of everyday life ebb away as you focus entirely on perfecting your technique and stamina. You'll feel reborn!

CROSS-COUNTRY SKIING

9 SPORTZENTRUM ZELTWEG TRAIL

Opening times:

Daily from 9 a.m. to 4.30 p.m.

Evening cross-country skating tracks: Tuesday, Thursday, Friday
5.30 p.m. to 8 p.m.

10 % off the admission price!



In winter, this 1.5 km cross-country route is a popular training trail for classic and skating styles – artificial snow means you can always be sure of proper conditions. The adjacent shop stocks hire equipment. In the evening too, you can do some laps under the floodlights.

Bundesstraße 16, 8740, Zeltweg, tel.: +43 3577 24855

www.sportzentrum-zeltweg.at

10 SKILANGLAUF HOHENTAUERN

Pricing: Day pass adults €10.00 and day pass teenager (13-15 years) € 5,-
and day pass children (0-12 years) are free, more details on website

20 % off the 7-day pass



More than 20 two-thousanders encircle the sunny plateau of the Triebener Tauern pass, watching over cross-country skiers as they weave their way through the scenery. Two excellently prepared skating and classic trails run for 13 km – snow is guaranteed for 2.5 km – awaiting winter sports fans of every age and ability.

Sportstraße 9, 8785 Hohentauern, tel.: +43 664 2425035

www.schilanglauf-hohentauern.at

11 KOBENZ-HOFTAL TRAIL

At the Kobenzer Langlaufzentrum Hoftal, you can expect a wonderfully groomed artificial snow trail that runs for about 1.5 km. It is suitable for both skiing styles (classic & skating). There is also a small fun park for the kids. (Tuesday, Thursday and Friday until 8.30 p.m. under floodlights.)

Sportgasse 4, 8723 Kobenz, tel.: +43 664 4743341

www.unsc-kobenz.at

12 TRAIL IN THE HINTERTAL

If the snow conditions are good, the trail is freely accessible.

Gasthof Wachter, Gaalgraben 27, 8731 Gaal, tel.: +43 3513 222

13 CROSS-COUNTRY SKIING IN SECKAU

Access: Mountain restaurant at Hart/Seckau

The Tremmelberg Trail (7.5 km, medium to difficult) and the Panorama Trail (5.2 km, easy to medium) are situated in the beautiful region of Seckau, delighting visitors with their idyllic natural backdrops.

Hammergrabenstraße, 8732 Seckau, tel.: +43 676 87428692

14 CROSS-COUNTRY SKIING IN THE LOBMINGTAL

The Apfelberg trail or the trail along the Lobmingbach (stream) towards Kleinlobming.

Depending on the winter conditions, there are several opportunities to go cross-country skiing in Großlobming or Kleinlobming.

tel.: +43 676 847637400

CROSS-COUNTRY SKIING IN OBDACH & ST. ANNA

15

- Access via the St. Anna sports ground – a circular trail approx. 2 km, skating or classic style.
- Trail at the Hochfeld in Obdach – a circular trail approx. 2 km, skating or classic, provided winter conditions are suitable.

tel.: +43 664 5186441

CROSS-COUNTRY SKIING IN ST. MAREIN-FEISTRITZ

16

Access at the edge of the village of Prankh, and car park at the retirement home in Wasserleith.

Cross-country skiing enthusiasts can take this circular trail (approx. 8 km) if winter conditions are suitable.

tel.: +43 3515 4232

CROSS-COUNTRY SKIING IN PUSTERWALD

17

Short trail (approx. 1 km) if snow conditions are good.

tel.: +43 3574 2205 – www.pusterwald.at

CROSS-COUNTRY SKIING IN ST. JOHANN AM TAUERN

18

Access at the edge of the town, near Schuhhaus Schwarz.

A 4 km trail, suitable for classic and skating styles.

Level of difficulty: easy.

tel.: +43 3571 2204 – www.poelstal.gov.at

CROSS-COUNTRY SKIING IN PÖLS-OBBERKURZHEIM

19

Direction towards the Reifenstein ruins, access via the former lift station, depending on snow conditions: 1.94 km in the beautiful region of Pöls-Oberkurzheim.

tel.: +43 3579 8316 – www.poels-oberkurzheim.gov.at



SNOWSHOEING



GET YOUR
FREE
SNOWSHOEING
MAP

Mindfulness, listening deeply to yourself, and feeling restored: all this is part and parcel of snowshoeing. Strap on your snowshoes and experience the wintry mountain realm of the Murtal in all its magnificence. The atmosphere becomes almost meditative as you tread lightly through the stillness. There is nothing to disturb you; the stress and hectic nature of everyday life feel like light years away. Just the gentle crunch of snow underfoot as you make your way over rough and smooth. Uphill, downhill, following trails that you could never have explored without your snowshoes. Snowshoeing in the Murtal is becoming increasingly popular, as it can be enjoyed by anyone who can hike.



www.murtal.at/schneeschwandern

SNOWSHOE HIRE IN THE MURTAL

Numerous businesses provide snowshoe equipment for hire.

tel.: +43 3577 26600 – www.murtal.at

SNOWSHOE & TOBOGGAN HIRE

20

Opening times: Closed Monday and Tuesday; also Wednesday in bad weather. Open (Wed) Thursday to Sunday from 9 a.m. to 8 p.m.
Hire equipment must be booked.

Hire for €10.00 instead of €25.00



The Sabathyhütte (restaurant) is a popular place to embark on your ski tour or snowshoe adventure. The area around the mountain restaurant is particularly good for anyone wanting to give snowshoeing a try. Challenging tours are on offer for experienced athletes. A new attraction is the public sauna. Table bookings are recommended.

Granitzen 32, 8742 Obdach, tel.: +43 3578 8230

www.alpengasthof-sabathy.at

SNOWSHOE HIRE GAAL

21

Gaalgraben 27, 8731 Gaal, tel.: +43 3513 222

www.gasthofwachter.at

SNOWSHOEING TASTER ZONES

Enjoy your first taste of snowshoeing at the marked snowshoe taster zones.

www.murtal.at/schneeschuhschnupperrn

SNOWSHOEING TASTER ZONE IN KLEINLOBMING

22

Liftstraße 25, 8734 Kleinlobming, tel.: +43 676 847637400

www.lobmingtal.at

SNOWSHOEING TASTER ZONE IN GAAL

23

Gaalgraben 27, 8731 Gaal, tel.: +43 3513 222

www.gasthofwachter.at



OVERVIEW OF SNOWSHOE TOURS

Snowshoeing has become as much a part of the Murtal as snow-capped mountain peaks! There are lots of different tours available for beginners as well as experts, delighting young and old alike.

www.murtal.at/schneeschuhwandern

GLEINALPE

STEINPLAN VIA OBERKAMPER

Start: Winter – car park at the edge of Kleinlobming

Tour details: 11.2 km – 850 m (elevation gain) – 5.5 hrs – medium

WILDEGGKOGEL

Start: Preggraben – just before a level crossing

Tour details: 14.1 km – 840 m (elevation gain) – 5.5 hrs – easy

SEETAL ALPS

LINDERSEE

Start: Alpengasthof Sabathy – Seetal Alps

Tour details: 6.8 km – 440 m (elevation gain) – 3.5 hrs – medium

ZIRBITZKOGEL FROM THE WALDHEIMHÜTTE

Start: Car park of the Waldheimhütte – Seetal Alps

Tour details: 11.9 km – 820 m (elevation gain) – 5:50 hrs – medium

ZIRBITZKOGEL FROM SABATHY

Start: Alpengasthof Sabathy – Seetal Alps

Tour details: 12.8 km – 780 m (elevation gain) – 5.5 hrs – medium

SCHMELZ – WINTERLEITENSEE

Start: Car park right by the Schmelzhütte – Seetal Alps

Tour details: 3.2 km – 310 m (elevation gain) – 2 hrs – medium

HOHE RANACH

Start: Large car park at the Schmelz

Tour details: 6.8 km – 430 m (elevation gain) – 3 hrs – easy

SECKAU TAUERN

ROSENKOGEL FROM GAAL

Start: Winter car park at the Lanzalm

Tour details: 11.4 km – 670 m (elevation gain) – 5 hrs – medium

HOCHALM

Start: Car park at the Kühbergerhof

Tour details: 11.4 km – 770 m (elevation gain) – 5 hrs – medium

MÖDRINGALM

Start: Paying car park at the Bergerhube (Hohentauern)

Tour details: 6.4 km – 370 m (elevation gain) – 3 hrs – easy

MOARALM

Start: Paying car park at the Bergerhube (Hohentauern)

Tour details: 7.7 km – 340 m (elevation gain) – 3 hrs – medium



STUBALPE

ALTES ALMHAUS RAPPOLDKOGEL

Start: Altes Almhaus

Tour details: 8.4 km – 440 m (elevation gain) – 3.5 hrs – medium

SALZSTIEGEL – SPEIKOGEL

Start: Hirschegger-Sattel / Salzstiegelhaus

Tour details: 5.9 km – 520 m (elevation gain) – 3.25 hrs – medium

GABERL TURNERALM

Start: Gaberl car park

Tour details: 14.3 km – 550 m (elevation gain) – 5 hrs – medium

KLEINLOBMING TASTER TOUR

Start: Skilift Kleinlobming

Tour details: 3.2 km – 252 m (elevation gain) – 1.5 hrs – easy

WÖLZ- UND ROTTENMANN TAUERN

EDELRAUTEHÜTTE

Start: Car park of the Loipenzentrum Hohentauern

Tour details: 6 km – 180 m (elevation gain) – 2.5 hrs – easy

PASSHÖHE

Start: Car park at Passhöhe (Hohentauern)

Tour details: 5.8 km – 170 m (elevation gain) – 2.5 hrs – easy

SCHWABERGERALM

Start: Car park at the Bichlerhütte

Tour details: 10.6 km – 470 m (elevation gain) – 3.75 hrs – medium

WILDALM

Start: Car park at the Goldwaschanlage Pusterwald (gold-panning site)

Tour details: 8.5 km – 510 m (elevation gain) – 4 hrs – medium

HABRING

Start: Car park at the Schilift Oberzeiring

Tour details: 8.1 km – 560 m (elevation gain) – 4 hrs – medium

SIGNPOSTED SNOWSHOEING TOURS

In HOHENTAUERN you'll find four wonderful signposted snowshoe tours. Hohentauern captivates visitors with its guaranteed snow, enchanting panoramas and moments of escape from everyday life. In Kleinlobming too, there is a marked snowshoe trail, mainly suitable for beginners.

www.murtal.at/schneeschuhwandern

SNOWSHOE TRAIL HOHENTAUERN

Start: Car park at Passhöhe (Hohentauern)

Tour details: 5.8 km – 170 m (elevation gain) – 2.5 hrs – easy

The pass landscape of Hohentauern in the Erlebnisregion Murtal is ideal for snowshoeing. Gently undulating terrain, vast meadows, numerous lakes and views of the surrounding mountains create a perfect location for snowshoeing.

MÖDRINGALM

Start: Paying car park at the Bergerhube (Hohentauern)

Tour details: 6.4 km – 350 m (elevation gain) – 2.5 hrs – easy

Over recent years, the Triebental has emerged as a reliable "insider's tip" for guaranteed snow in the Murtal Region. The valley was shaped by the Ice Age, and the weather and snow coming in from the north mean that you will find the depths of winter here even when there isn't a single snowflake to be seen in the south of the Murtal Region.

MOARALM

Start: Paying car park at the Bergerhube (Hohentauern)

Tour details: 7.7 km – 340 m (elevation gain) – 3 hrs – medium

A snowshoe hike on the Moaralm is a different experience every time, and snowshoe hikers have been enjoying it all the more since the start of 2022 when a newly signposted snowshoe trail with pink markers and arrows was planned and established in cooperation with the Hunting and Forestry Office of Admont Abbey.

EDELRAUTEHÜTTE

Start: Car park at the Loipenzentrum Hohentauern

Tour details: 7.8 km – 470 m (elevation gain) – 3.5 hrs – medium

In keeping with the slogan "A little closer to heaven", the Große Scheibelsee (lake) near the Edelrautehütte (mountain restaurant) was picked as one of Hohentauern's "7 Heavenly Places" in the Erlebnisregion Murtal. This snowshoe tour is therefore destined to take you one step closer to the heavens. The hike to the Edelrautehütte is also considered one of the classic snowshoe routes of the Murtal Region.

KLEINLOBMING TASTER TOUR

Start: Skilift Kleinlobming

Tour details: 3.2 km – 252 m (elevation gain) – 1.5 hrs – easy

This is a great opportunity for beginners to give snowshoeing a try. There is a flat area designated as a snowshoe taster zone, where you can get to grips with wearing snowshoes. Then it's off on the real taster tour. Not only is this short tour a lovely introduction to the activity, but it also provides an idyllic view over Kleinlobming. For all those descending along the old lift road, there are a few places where you can stop for refreshments. Snowshoes can also be hired on site.

TauernWinter Wochen

18. 12. 2023
- 15. 3. 2024

HOHENTAUERN

CHEAPER
WITH THE



The Gästeverein Hohentauern offers from Monday to Friday a varied program and numerous opportunities to try out new things on vacation.



Please register
in time!
Limited number
of participants!



every **Monday**

LATERNS HIKE

GUIDED WINTER-HIKING-TOUR
Dec.+Jan. 17:00, Feb.+Mar. 18:00
MeetingPoint: Tourismusbüro, Duration: ca 1,5 hrs.
FREE WITH THE HOHENTAUERN-CARD
20,- without Card (up to 16 Jahre free!)
Last register: **Monday, 12:00**
Tourist-Office, Info: +43 3618 21300

every **Tuesday**

AIR GUN SHOOTING

18:00 – 20:00, Berghof Kandler
3 targets / 5 shots (from 12 years!)
FREE WITH THE HOHENTAUERN-CARD
5,- without Hohentauern-Card
Last register: **Monday, 12:00**
Tourist-Office, Info: +43 3618 21300

every **Wednesday**

ALPINE CURLING

17:00, Restaurant Lanz
Duration: ca 2 hrs., inkl. 1 Hot-Drink
FREE WITH THE HOHENTAUERN-CARD
12,- without Hohentauern-Card
Last register: **Tuesday, 12:00**
Tourist-Office, Info: +43 3618 21300

every **Thursday**



HUSKY HIKE

MeetingPoint: 10:00, Loipenzentrum
Duration: ca 2 hrs., (from 12 years!)
take spikes withyou (if available)
29,- WITH THE HOHENTAUERN-CARD
69,- without Hohentauern-Card
Last register: **Wednesday, 12:00**
Tourist-Office, Info: +43 3618 21300

every **Friday**

SNOWSHOE HIKE

MeetingPoint: 14:00, Loipenzentrum
(Depending on the tour, carpooling is necessary!)
Duration: ca 2,5 hrs.
10,- WITH THE HOHENTAUERN-CARD
25,- without Hohentauern-Card
(up to 16 years free!)
Last register: **Thursday, 12:00**
Tourist-Office, Info: +43 3618 21300

**HOHEN
TAUERN**
a little closer to heaven

MURTA
STEIER
MARK

www.murta.at

TOP SKI TOURS



From the Rottenmann Tauern to the Seetal Alps all the way to the Stubalpe, the Murtal Region enchants visitors with its powdery snow and magnificent views in the lofty heights. An extensive network of touring routes stretches across the region, with options for beginners and more challenging alternatives for the pros. Delight in this sublime landscape and the unspoiled beauty of nature. Vast slopes and boundless mountain crests are just waiting to be explored. The legendary panorama will captivate you and fill you with awe. Mighty white slopes invite you to relish the sense of freedom and feel your heart beat... Head online to find many more touring tips.



www.murtal.at/skitouren

ZIRBITZKOGEL (SEETAL ALPS)

Tour details: 10.7 km – ascent 780 m – descent 780 m – duration 2.75 hrs – level of difficulty: easy



A half-day skiing tour offering plenty of wonderful views, from the Waldheimhütte mountain restaurant on the Zirbitzkogel. The tour is also suitable for newcomers to the sport. The snow pole markers mean that you can follow the tour route even when the weather isn't great. Once on the Zirbitzkogel, stop by the Schutzhäus (mountain restaurant) for a bite to eat at 2,376 m above sea level.

Start: Car park at the Waldheimhütte (St. Anna)

ROSENKOGEL & SCHNEEGRUBE (SECKAUER TAUERN)

Tour details: 12.1 km – ascent 970 m – descent 972 m – duration 3.75 hrs – level of difficulty: medium



One of the easiest, most popular and most traversed ski tours in the Murtal. As the area is forested and there is some relatively flat terrain, the Rosenkogel is also do-able when the weather and snow conditions are less than ideal. Adding the Schnee grub e mountain to your excursion involves more exposed terrain, and the descent is also much steeper.

Start: Heading towards Sommertörl – until winter closure

KLEINER BÖSENSTEIN (TRIEBENER TAUERN)

Tour details: 3.3 km – ascent 800 m (elevation gain) – duration 2.5 hrs – level of difficulty: medium



As an added bonus or a worthwhile alternative tour, a trip to the Großer Bösenstein usually promises better snow conditions. The tour runs via the Almboden, through an old pine grove, and then on to the large Scheiblsee lake – with any luck, you'll be moving beneath mountain pines blanketed with snow. The beauty of this landscape shines through even at this point. Beyond the Scheiblsee, continue up some steeper terrain and sloping crossings to the Elendkar (a cirque), then on to the Kleiner Bösenstein.

Start: Car park Scheibelalm (access via Mautstraße)

HOCHSCHWUNG (WÖLZER TAUERN)

Tour details: 6.1 km – ascent 1,000 m – descent 1,000 m – duration 2.5 hrs – level of difficulty: medium



The Hochschwung tour is pretty demanding. The ascent can be tackled not only in summer, but in winter too. Enjoy the view of the Tubaysee lake and the breathtaking scenery.

Start: Car park of the Hansbauer restaurant in Bretsteingraben

OUTDOOR EXPERIENCES



Winter in the Murtal isn't just for skiers, touring enthusiasts or keen snowshoe hikers. Anyone who loves snow will be delighted by the range of fun leisure activities here! Feel the crisp mountain air on your cheeks as you whiz down a hill on a toboggan, or make friends with the animals on an alpaca hike or a horse-drawn sled ride. "Get your skates on!" is the motto when it comes to ice skating. There are many other nature-based sights and attractions, revealing the most beautiful sides of our region. We wish you lots of fun!



www.murtal.at/sportaktiv

SLEDGE HIRE IN WINTERLEITEN

24

Opening times: Hire times: Saturday, Sunday and public holidays:
1 p.m. to 7 p.m.
Please contact the Winterleitenhütte directly for its opening times.

Discounted price €3,-



Winter wouldn't be winter without some sledding! Flying down a toboggan run on a sled together is an experience not to be missed by any family. The "Naturfreunde Judenburg" group organises sled hire in Winterleiten.

Winterleitenhütte, Ossach 45, 8750 Judenburg, tel.: +43 3578 8210
www.winterleiten.com

RODELZENTRUM WINTERLEITEN

25

Opening times: Daily from 10 a.m. to 9 p.m.
Toboggan hire at the Zielhaus

Discounted price €2.50



The 2.4 km natural toboggan run starting at the Winterleitenhütte mountain restaurant (1,800 m) is a great attraction the whole family can enjoy. Its level of difficulty is easy/medium and it has been used as an Elite World Cup run. It leads down to the Schmelzhütte restaurant (1,560 m). Tobogganers can make the most of it until 9 p.m. thanks to the floodlights – and it's completely free.

Winterleitenhüttestr. 1, 8742 Obdach, tel.: +43 664 73725408
www.rc-obdach.at

CARRIAGE RIDES AND SLEDDING

26

Opening times: By arrangement!
Prices: €100,- 30 minutes, €130.00 – 45 minutes

10 % off carriage ride



A snowy winter means we can get the horse-drawn sledges out. Wrap up snugly in warm blankets and delight in the wondrous winter landscape along the river Mur. If there's not much snow on the ground, we can also take you on a carriage ride. Alternative routes on request.

Linderweg 27a, 8724 Spielberg, tel.: +43 664 8413503
info@bionorika.at, www.bionorika.at



OUTDOOR EXPERIENCES

28 LAIKAMHOF ALPACAS

Opening times: Please phone to arrange

Price: A guided walk for 4 people costs €80.00

Each additional person €20.00 with alpaca and € 10,- without alpaca

10 % discount per person



On a leisurely stroll through our forest in Styria's "Zirbenland" region, you can make friends with our cute four-legged residents and realise that they all have their very own distinct personalities. Young or old, this walk promises to be an unforgettable experience. We also stock alpaca products!

**Schwarzenbach 10, 8741 Weißkirchen, tel.: +43 664 1205296
www.laikam.at**

29 WIESERHOF-ALPAKHOF-AUSZEITHOF

Opening times: All year round except Sundays and public holidays by advance booking.

Price: €80.00 for three people, each additional person €20.00

10 % discount per person



As one of Austria's very first "Auszeithöfe" ("farms for escaping everyday life"), the Wieserhof offers you the chance to press pause on daily life for a while and restore your inner balance – whether on an alpaca walk, learning about old handicraft techniques at a workshop or attending a preventative health seminar.

Our motto: "Awaken your senses!"

**Feistrizgraben 34, 8755 St. Peter ob Judenburg
tel.: +43 664 4212325, www.wieserhof.at**

30 BOGENSPORTVEREIN SECKAU

Opening times: Daily Monday to Sunday from 8 a.m. to 6 p.m.
(Please book in advance for instruction sessions)

Price: Adults €10.00 with own equipment, €35.00 incl. instruction and equipment; children €6.00 with prior experience, €20.00 incl. instruction.

20 % discount



The increasingly popular sport of archery is something the whole family can enjoy, whether you're 8 or 80. It's an activity that helps to build muscle as well as bring body and mind into balance. Our 3D par-cours leads you through an idyllic stretch of forest and takes around two hours to complete.

**Tatscherweg 1, 8732 Seckau, tel.: +43 664 2406091
www.reithof-horseandspirit.at**

31 ICE CLIMBING

Opening times:
Please sign up in advance

10 % off ice climbing



All those keen to venture onto the ice with a pick and crampons for the first time will find the Alpinpark Steinmühle Climbing Garden a great place to try their hand at ice climbing under controlled conditions on a taster course!

**Alpinpark Steinmühle, Puchschachen 5, 8731 Gaal
tel.: +43 664 4431251 - www.alpineerlebniswelt.com**

FACKELWANDERUNG OBERZEIRING

32

Opening times: every second Thursday. For exact dates and times see Homepage www.silbergruben.at

Preis: included torch and guide € 13,-

10% off the torchlight hike



Experience the history of the Oberzeiring market on a mystical torchlight hike.

Marktplatz 3, 8762 Oberzeiring, tel.: +43 664 75125131
kontakt@silbergruben.at, www.silbergruben.at

ICE RINK AT THE SPORTZENTRUM ZELTWEG

33

Opening times: Early September to mid March
 Tuesday, Friday, Saturday, Sunday: 2 p.m. to 4 p.m.
 Fridays: evening skate from 8 p.m. to 9.30 p.m.

10 % off the price!



From early September to mid March, the Aichfeldhalle offers fun on the ice no matter what the weather is like. Ice skating fans of all ages can sweep around the rink at their own pace.

Bundesstraße 16, 8740, Zeltweg, tel.: +43 3577 2356613
www.sportzentrum-zeltweg.at

FAMILIENERLEBNIS PARK MURTAL

34

Opening times: Open all year round
Admission: Adults €8.00, children €5.00, up to 3 years go free

30 % off the upkeep fee



A popular destination where kids can still be kids. Llamas, donkeys, ponies, goats, sheep, and many other animals look forward to be petted and admired. Take our feed bag with you to spoil our animals. Display boards provide all kinds of interesting facts.

Preggraben 33, 8715 St. Margarethen, tel.: +43 3832 30055
www.erlebnispark-murtal.at

BENEDIKTINERSTIFT ADMONT - BONUSPARTNER

35

Öffnungszeiten: according to Homepage
Preise: Adults € 16,50, Kids € 10,50, Price without guided tour library
20% off with Murtal Guest Card
Kirchplatz 1, 8911 Admont, tel.: +43 3613 2312604
museum@stiftadmont.at, www.stiftadmont.at



ICE RINKS IN THE MURTAL

36 PÖLS-OBERKURZHEIM

Opening times: Monday to Friday 2 p.m. to 6 p.m., Saturday and Sunday 10 a.m. to 12 p.m. and 2 p.m. to 6 p.m. Fees apply.

Enzersdorfer Weg 5, 8761 Pöls-Oberkurzheim, tel.: +43 3579 8316

37 MÖDERBRUGG

The ice rink is open free of charge when the temperatures are suitably wintry.

Im Dorf 2, 8763 Pölstal/Möderbrugg, tel.: +43 3571 2204

38 KINDERSCHILIFT PÖLSTAL

The ice rink is open free of charge when the temperatures are suitably wintry.

Hauptstraße 27, 8762 Pölstal/Oberzeiring, tel.: +43 664 5792529

39 GASTHOF BEREN JÄGERHEIM

The ice rink is open free of charge when the temperatures are suitably wintry.

Bretstein 8, 8763 Pölstal/Bretstein, tel.: +43 3576 205

40 PUSTERWALD

The ice rink is located at the sports ground.

8764 Pusterwald, tel.: +43 3574 2205

41 LIND PRIMARY SCHOOL

The ice rink is open free of charge when conditions are suitably wintry.

Schulstraße 3, 8724 Spielberg, tel.: +43 3577 223740

42 SECKAU PRIMARY SCHOOL

Seckau 120, 8732 Seckau, tel.: +43 3514 5205

43 SKILIFT KLEINLOBMING

Open daily from 9 a.m. to 9 p.m. in wintry conditions.

Liftstraße 25, 8734 Lobmingtal, tel.: +43 676 847637400

44 GAALERHOF LAKE

Sportzentrum Gaalerhof: ice skate hire and ski hire.

Schattenberg 49, 8731 Gaal, tel.: +43 664 1417858

45 WEIERMOARTEICH

Ice skating at the frozen lake of Weiermoarteich in Seckau.

Sonnwenddorf 8, 8732 Seckau, tel.: +43 3514 5266

46 LOBMINGTAL

Ice rink in the town when conditions are suitably wintry.

Hauptstraße Nr. 22, 8732 Lobmingtal, tel.: +43 3512 82923

47 WINTERLEITENSEE

Ice skating at the frozen lake of Winterleitensee. Use at your own risk.

Ossach 45, 8750 Judenburg, tel.: +43 3578 8210

48 FOHNSDORF-HETZENDORF

Ice rink with ice disco.

**Pölssteg 10, 8753 Fohnsdorf, tel.: +43 676 5708626
fsv-hetzendorf@outlook.com**



ALL INFO AT
REDBULLRING.COM



NO SUCH THING AS HIBERNATION
WINTER AT THE RING

REDBULLRING.COM



OUTDOOR EXPERIENCES

49 **BENEDIKTINERABTEI SECKAU**

Opening times: Basilica daily 6 p.m. to 8 p.m. , free admission

Marvel at 850 years of history and discover the abbey in Seckau. The basilica underwent interior renovation in 2017 and now shines in all its remarkable splendour. In addition to a book and art shop, it also has its own distillery.



Seckau 1, 8732 Seckau, tel.: +43 3514 5234
www.abtei-seckau.at

50 **WALLFAHRTSKIRCHE MARIA SCHNEE**

Opening times: All year round

The Maria Schnee Chapel is situated at 1,850 m in the Seckau Alps and was consecrated in 1660. It is a charming location offering delightful views of the Murtal, the Gleinalpe & Stubalpe and the Seetal Alps. Just a few metres away is the summit cross of the Hochalm. There is a breathtaking view of the Eisenerz Alps and the Murtal from here.



Starting point: ADEG car park, 8732 Seckau, tel.: +43 3577 26600

51 **STEINERNE MIARZ**

Opening times: Open all year round

The "Steinerne Miarz" is a statue of the Virgin Mary, which stands on a stone plinth. It is located on the highest point of the Wölkerkogel close to the Altes Almhaus and offers spectacular views of the Graz basin and the Murtal.



Kemetberg 60, 8591 Maria Lankowitz, tel.: +43 3577 26600

52 **KAPELLE MARIA LORETTO**

Opening times: Open all year round

Accessible on foot with snowshoes or touring skis, tucked away in idyllic mountainous scenery, is this alpine chapel at 1,850 m above sea level. The Loretto Chapel is a simple wooden structure built on stone foundations. Its remoteness and wonderful mountain panorama inspire serene moments of devotion and reflection. Access road in the Hintertal closes for winter.



car park Sommertörl, 8731 Gaal, tel.: +43 3577 26600

INGERINGSEE

53

Opening times: Open all year round

This beautiful mountain lake thrills the heart. Set at 1,200 m and bordered by the Seckau Alps, it is a magnet for leisurely rambles. The lovingly designed Klementi Kapelle (chapel), situated right by the lake, offers visitors a very special retreat and an extraordinary view.



Starting point: Ingeringseeweg 2, 8731 Gaal, car park 4
tel.: +43 3577 26600, www.murtal.at

WINTERLEITENSEE

54

Opening times: Open all year round

The Winterleitensee lake is situated at 1,800 m above sea level and offers a wonderful view of the Zirbitz mountain. It enjoys an almost magical position, shrouded in mystery and serenity at the foot of the Gipfelkönig. Several trails lead to the Winterleitensee. One road runs directly to the Winterleitenhütte (mountain restaurant). Continue along the road from the Schmelzhütte and take a leisurely amble uphill next to a speedy toboggan run. A more challenging route leads via the "Sterngassl", also very popular among snowshoe hikers.



Ossach 45, 8750 Judenburg, tel.: +43 3578 8210

SCHEIBELSEE HOHENTAUERN

55

Opening times: Open all year round

A beautiful swathe of unspoiled natural scenery awaits visitors on the way to the Scheibelsee lake. It's a place where nature lovers can find peace and the chance to reflect. This mountain hike is also suitable for inexperienced or beginner hikers. Once at the lake, a special natural secret will be revealed. Here, you're definitely a little closer to heaven.



Edelrautestraße 5, 8785 Hohentauern, tel.: +43 3577 26600

THE MURAUEN (WETLANDS)

56

Opening times: open all year round

The Mur, the river that gives the Murtal Region its name, snakes through our region like a lifeline. Here you'll find lots of stunning, tranquil nooks where you can observe winter at its finest. Many animals and special natural wonders can be observed along the Mur. Go on a journey of discovery and explore the beauty of the river.



Murbrücke car park, 8734 Lobmingtal
www.murtal.at

INDOOR- EXPERIENCES



We've got the perfect programme for bad weather: all kinds of indoor experiences in the Murtal. You certainly won't be bored. How about a round of black light golf? Perhaps you'd prefer to head to Playworld in Spielberg so that you and your little ones can blow off some excess steam on the trampolines, at laser tag or in the Fun Area. Fancy a round of bowling or skittles? Send your ball rolling along the lane and have fun with your companions. Ever peeked behind the curtain of a coffee roaster? You'll find all this and more in the Erlebnisregion Murtal.



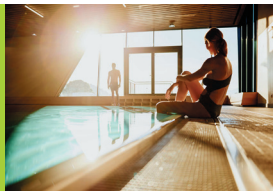
www.murtal.at/ausflugsziele

AQUALUX THERME FOHNSDORF

57

Opening times:

All year round

Prices: Please see website**10 % off the day pass
(adventure area)**

In the heart of the Murtal district, the AQUALUX Therme Fohnsdorf is the perfect invitation to wind down and explore. Family-friendly fun and blissful peace and quiet are both in plentiful supply here. The thermal indoor pool boasts wild water fountains, wave pools and massage pools – it also has a well set up kids' area, offering swimming guests big and small enough space for a refreshing day at the spa. Perhaps the best place to relax at the AQUALUX Therme Fohnsdorf is in the VITADOME quiet zone and the spacious sauna complex, which contains four different saunas as well as infrared cabins and solariums. You'll also find that "special something" in the thermal outdoor pool, with views of the Zirbitzkogel mountain and the majestic Gabelhofen Castle. The icing on the cake is the combination of cosmopolitan cuisine and regional products available in two restaurants – an indulgent culinary delight.

Thermenallee 10, 8753 Fohnsdorf, tel.: +43 3573 20780
willkommen@therme-aqualux.at, www.therme-aqualux.at

ERLEBNISBAD JUDENBURG

58

Opening times: All year round, winter October to April**Prices:** Please see website**10 % discount**

Sport, fun and games the whole year through! In winter too, the Erlebnisbad Judenburg with indoor pool is an appealing place to go for a swim: there's a sports pool as well as a children's area for having a whale of a time. Plus, expect thrills and excitement when the giant water feature animals Nessy and the Great White Shark emerge.

Fichtenhainstraße 3, 8750 Judenburg, tel.: +43 3572 85492
www.judenburg.at/erlebnisbad

SCHAUBERGWERK OBERZEIRING

59

Opening times: 1 November to 30 April

Guided tours of the mine Sundays 9.30 a.m. and by prior arrangement Museum and shop Saturday and Monday, Tuesday 1 p.m. to 4 p.m. and Sunday 9 a.m. to 11.30 a.m.

Admission: Adults €13.50 and children €7,00, admission over 4 years**10 % off the admission price**

Follow in the footsteps of the miners at the visitors' mine at Oberzeiring Museum, and marvel at the old ladders and fireplaces. Learn how people worked in the past, and about the fate that awaited the pitmen according to legend. An experience you can enjoy whatever the weather in the town of Oberzeiring, where history is ever-present.

Marktplatz 3, 8762 Oberzeiring, tel.: +43 664 75125131
kontakt@silbergruben.at, www.silbergruben.at

INDOOR EXPERIENCES

60 STERNENTURM JUDENBURG

Opening times:

Please see website

Admission: Adults €12.00 and children €9.00

10 % off the admission price



Lift off into space – fun and adventure guaranteed.

Located in the middle of Judenburg's main square, the highest planetarium in the world is housed in an old city tower that is over 500 years old and 75 metres tall. The Sternenturm is equipped with a glass lift, which, in a world-first, rises up through the huge bell tower. With a glass floor and ceiling, the journey to the top is a remarkable experience.

Europe's most state-of-the-art planetarium will sweep you away into the mysterious world of planets, stars and galaxies. Sophisticated 3D space action that inspires wonder, broadens your horizon and is simply fun. Depending on content, the film presentations are age-specific and suitable for children over the age of 4. After every film show, there'll be entertaining live lecture in the starry sky above you.

Kirchplatz 1, 8750 Judenburg, tel.: +43 3572 44088
reservierung@sternenturm.at, www.sternenturm.at

61 VR CAFE SPIELBERG

Opening hours: according to appointment**Entrance:** according to the homepage

10% discount for the entrance price



Enter the world of Virtual Reality (VR) in Spielberg! VR refers to a digital computer-generated reality, in which you can immerse yourself with the help of our glasses. There are two options for groups (4 people can play at the same time). You can choose between Escape VR-games and Arcade VR-games.

Kartstraße 1, 8724 Spielberg, tel.: +43 664 5022588
info@hickster.at, www.vrcafe.at

62 STADTMUSEUM JUDENBURG

Opening times: Open all year round. Tuesday to Friday 9 a.m. to 2 p.m.

Saturday 10 a.m. to 5 p.m., July and August: Tuesday to Saturday 9 a.m. to 5 p.m.

Admission: Voluntary donation**Guided tours: 40% off the admission price**

adults €3,- instead of €5,-



The Stadtmuseum Judenburg depicts the history of the town from the Stone Age right through to the present day! Its extensive collection provides a window into life in the region, while the events programme includes tours for all ages as well as temporary exhibitions on the region's history, art and culture.

Kaserngasse 27, 8750 Judenburg, tel.: +43 3572 85053
stadtmuseum@judenburg.at, www.judenburg.at/stadtmuseum

EDELSTEINE KRAMPL

63

Opening times:

Monday to Friday: 9 a.m. to 6 p.m., Saturday: 9 a.m. to 12 p.m. (Closed from 24th of Dec until 6th January)

Admission for guided tours: Adults: €8.00, children: €3.00, Group rate for over 10 people: €6.00

Group rate for school pupils: €3.00

30 % off the admission price (except groups)



Edelsteine Krampfl is a stone processing company in the middle of the Styrian Zirbenland. Here, mainly Styrian stone is processed into unique products and jewellery. Follow the processing step by step and learn interesting facts about the processing of regional natural stones during a guided tour through the glass factory. The factory is a popular destination for families and travel groups, providing gemstone-cutting workshop, artist's studio, goldsmith, stone sculptor and glittering world of crystals. You find here charismatic products and precious pieces of jewellery. In addition, an extensive workshop and activity programme awaits you. Become a gemstone cutter, jewellery designer or create your partner rings with the goldsmith of the house. This and much more can be discovered at Edelsteine Krampfl in Weißkirchen.

Bahnhofstraße 7, 8741 Weißkirchen, tel.: +43 3577 81111
www.edelsteine-krampfl.com

HIRSCHHORN CARVING DEMONSTRATIONS

64

Opening times: By arrangement. Please call us; we are almost always on site and happy to help.

Admission: Carving demonstrations free



Our studio is no place for the ordinary. Instead, we produce one-of-a-kind items far removed from cheap mass-produced goods. We are passionate craftspeople and create incomparable pieces out of natural raw materials. Take a look at selected pieces of our work in our showroom/shop!

Wirtsalmsiedlung 10, 8785 Hohentauern, tel.: +43 3618 419
+43 664 6314307, hirschhorn@aon.at, www.hirschhorn.at

HIRSCH HAUSER

65

Opening times: Monday to Friday 9 a.m. to 6 p.m. and Saturday and Sunday 2 p.m. to 6 p.m.

Prices: Farm tour of egg production and game enclosure free of charge by appointment



Im Hausergraben we offer on our area of approx. 30 ha about 220 red deer (including their calves) a home. Besides the shop with our own products, we also offer guided tours by appointment.

Hausergraben 13, 8734 Lobmingtal, tel.: +43 650 444 2251,
office@hirsch-hauser.at, www.hirsch-hauser.at

INDOOR EXPERIENCES

66 INDOORKART SPIELBERG

Opening times: Tuesday to Friday 4 p.m. to 10 p.m.
Saturday 10 a.m. to 11 p.m., Sunday and public holidays
10 a.m. to 9 p.m.

Admission: take a look on www.indoorkart.at

10 % off go-karting



Motorsport brings high-octane energy to the Murtal all year round. Go-karters of all ages can enjoy a few laps of the track regardless of the weather outside.

The indoor go-karting track is an ideal recreational experience whether with family, friends, work or your club! From individual races to team competitions and company events, it offers everything a go-karter could possibly wish for.

Children who are at least 6 years old and 125 cm tall can drive the children's karts on their own. For smaller guests, we offer the possibility to ride with their parents in a double-seater.

Please note! Exclusive track bookings must be for over 8 people. If there are fewer than 8 people, other visitors can join in at any time.

Kartstraße 1, 8724 Spielberg, tel.: +43 3577 23655
info@indoorkart.at, www.indoorkart.at

67 PLAYWORLD SPIELBERG

Opening times and bookings:

Please visit our website for current times!

10 % off admission to the Kids Area and Jump Area



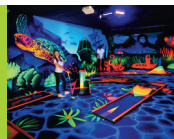
Austria's most modern adventure playworld promises fun and action for the whole family. Bounce around in the Jump Area, feel the thrill in the Laser Area, embark on pure adventure in the Kids' Area or have a ball in one of the six rooms of the Party Area – there's never a dull moment at Playworld Spielberg!

Ring Rast Straße 6, 8724 Spielberg, tel.: +43 3512 20400
www.playworld-spielberg.at

68 INDOOR BLACK LIGHT MINIGOLF

Opening times: Friday, Saturday and Sunday from 10 a.m.,
last admission 6.30 p.m.
Winter holidays from 25 December and semesters daily 10 a.m. to 7 p.m.
(Group requests possible outside of opening times)

Admission: €9.90 (over 14 years)
€7.90 (up to 14 years)



Austria's newest and most state-of-the-art indoor mini golf complex offers visitors a 5D experience in four different themed worlds: dinosaurs, pirates, underwater, and space. With 3D images, smells, stirring music and light effects, it's a thrill for the whole family. 18 lanes – 2 levels across 340 m²

Pichlhofen 60, 8756 St. Georgen ob Judenburg, tel.: +43 3583 2116
info@blacklight-minigolf.at, www.blacklight-minigolf.at



INDOOR BLACK LIGHT MINIGOLF

AT THE MÄRCHENWALD AMUSEMENT PARK STEIERMARK

ST. GEORGEN OB JUDENBURG



MINIGOLF UNDER BLACKLIGHT

18 LANES WITH 3D GLASSES

4 THEMED WORLDS ACROSS 2 LEVELS

ALSO SUITABLE FOR GROUPS

OPENING HOURS AT
WWW.BLACKLIGHT-MINIGOLF.AT



10% DISCOUNT WITH MURTAL GUEST CARD

TEL.: +43 3583 2116

PICHLHOFEN 60 ,8756 ST. GEORGEN OB JUDENBURG

INDOOR EXPERIENCES

69 RED BULL RING TOUR

Opening hours: daily 8 a.m. - 6 p.m., reservation required

Prices: € 20,- (from 15 yrs.), pensioners: € 18,-, Pupils: € 10,-, students and apprentices up to 26 years of age years € 18,-, children up to 6 years free of charge € 57,- family ticket up to 5 pers. (max. 2 PE)

30% discount on the tour



Immerse yourself in the world of motorsport. Find out how Max Verstappen and Brad Binder feel when they stand on the top step of the podium. Discover where the decisions are made, that affect the course of the Formula 1 and MotoGP races. A look behind the scenes at one of the world's most modern race tracks will leave you wide-eyed and amazed. The 90-minute tour leads into areas, which are normally closed to visitors. One of the highlights is the Red Bull Wing, which is modelled on the rear of a racing car. In the vehicle exhibition in the Welcome Centre you can also get up close with the racing legends, who have made motorsport history. With the ticket for the guided tour, every visitor receives 10 % discount in the Fan Shop.

Our Red Bull Ring Tour is very popular, so we recommend you book in advance.

Pre-booking at information@redbullring.com or +43 3577 202. This will ensure your participation in the Red Bull Ring Tour.

Red Bull Ring Straße 1, 8724 Spielberg, tel.: +43 3577 202
www.redbullring.com

70 EISENBahnMUSEUM KNITTELFELD

Opening times: All year round for groups over 10 people by prior arrangement!

1 April to 31 October from Tuesday to Sunday 9 a.m. to 4.30 p.m.

Admission: Please see website

10 % off the admission price



The Railway Museum is situated directly on the Mur Cycle Trail. It houses some unique collections, such as the world's largest collection of railway caps (as recorded in the Guinness Book of Records) as well as ladies' ball gifts and artefacts illustrating the history of the railway.

Ainbachtal 14a, 8720 Knittelfeld, tel.: +43 676 5440795
office@eisenbahnmuseum-knittelfeld.at, www.eisenbahnmuseum-knittelfeld.at

71 OM – DAIRY EXPERIENCE WORLD

Opening times: Monday to Saturday, please phone to arrange

Admission: 6-14 years €5.50, and over 14 years €11.00



Visit the Obersteirische Molkerei (dairy) to learn all about how we turn our milk into our first-rate OM speciality cheeses. We include everything from what our farmers do to the different milk varieties and even a cheese sampling.

Hautzenbichlstr. 1, 8720 Knittelfeld, tel.: +43 3512 86100
office@oml.at, www.oml.at/erlebniswelt

JAMILA COFFEE - COFFEE ROASTING

72

Opening hours: Tuesday to Friday 8.30 a.m. - 6 p.m., Saturday 8.30 a.m. - 5 p.m., Closed on Sunday, Monday and holidays

Admission: Cafe and Shop free. Guided Coffee-Belt tour € 10,- per person

10% discount for guided tours Coffee-Belt



Everything about coffee! Explore the popular hot drink with all five senses. Due to the unique roasting technique of master roaster Josiah Tiner, you will find a new taste experience for coffee lovers. During the tour you get information about the origin, roasting techniques (without live roasting).

Triester Straße 2 - 8724 Spielberg, tel.: +43 664 1153560
office@jamilacoffee.at, www.jamilacoffee.at

MODELLEISENBAHN KNITTELFELD

73

Opening times: Please see website

Admission: Adults €7.00, children go free when accompanied by an adult, children up to 16 years €4.00, groups from 15 people €6.00

10 % off the admission price



On an area of 160m², with a track length of about 700 m, approx. 80 trains per hour make their rounds through a lovingly designed landscape that resembles the Murtal Region. From steam locomotives to modern Railjets you can see here while the fire brigade rushes to a fire brigade or the balloon glides over the Neuberg Lake.

Bahnplatz 8, 8720 Knittelfeld, tel.: +43 3512 75168
www.modelleisenbahn-knittelfeld.at

KÜHBREIN – CIDER & MORE

74

Opening times: Shop: Monday to Friday 9 a.m. to 5 p.m., Saturday 9 a.m. to 12 p.m.

Tasting: By prior arrangement

Sampling: Adults €10.00 to €21.00

10 % off tastings



"An old trade, given a fresh twist". We at Kühbrein produce the finest apple wines and ciders in-house. The title of "World's Best Cider" has gone to this Murtal-based company no less than twice. We highly recommend trying these specialities on a guided tasting tour with most sommelier David Kargl. Also available with regional snacks and delicacies.

Graden 31, 8731 Gaal, tel.: +43 664 2034282
info@kuehbreinmost.at, www.kuehbreinmost.at

"ZUM THALHEIMER"

75

Opening times: Monday to Friday 8 a.m. to 12 a.m.
 Closed public holidays

10 % off Thalheim products



Thalheimer Heilwasser GmbH runs a shop in Zeltweg where you can buy not only Thalheim products, but also many other delicacies such as fresh fish from the Ausseerland region. Drop by our café to sample these products and spend an enjoyable couple of hours.

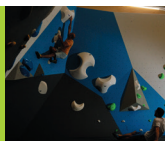
Rattenbergerweg 11, 8740 Zeltweg, tel.: +43 662 65828795
office@thalheimerheilwasser.at, www.thalheimerheilwasser.at

INDOOR EXPERIENCES

76 BLOCSPOT BOULDERHALLE

Opening times: Monday to Sunday from 6 a.m. to 11 p.m.

Admission: Please see website



Located in the heart of the Murtal, BlocSpot offers over 1,000 m² of space and 600 m² of climbing area where you can try out about 110 different coloured bouldering challenges that change every week. Our difficulty scale means that both beginners and pros always have something to tackle.

Bundesstraße 64, 8740 Zeltweg, tel.: +43 664 3982419
www.blocspot.at

77 SQUASH AT SPORTZENTRUM ZELTWEG

Opening times:

Daily from 9 a.m. to 11 p.m.

Tip – tennis in the indoor hall – play whatever the weather!

10 % off the price



You definitely need to give it all you've got in a game of squash. At the Sportzentrum Zeltweg, there are three squash courts available. Fans of this indoor sport or anyone simply interested in having a go can borrow some rackets here.

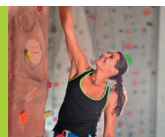
Bundesstraße 16, 8740, Zeltweg, tel.: +43 3577 24855
www.sportzentrum-zeltweg.at

78 KLETTERHALLE JUDENBURG

Opening times: Climbing hall: Monday to Friday 10.30 a.m. to 10 p.m., Saturday and Sunday 9.30 a.m. to 10 p.m.

Admission: Please see website

10 % off the admission price or course offer, except taster climbing sessions



The climbing hall is 860 m² and 17 m high, offering plenty of space for over 100 climbing routes and over 80 boulders. It also offers a wide range of courses for learning how to climb or improving your skills.

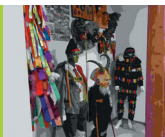
Waltersdorfer Straße 25, 8750 Judenburg, tel.: +43 664 88318654
kletterhalle@sportaktiv.at, www.sportaktiv.at

79 ALOIS PENZ FASCHINGSMUSEUM

Opening hours: on request

Entrance: Adults € 6,50, Adults group with 4 persons € 5,-, Children € 4,-, Children in a group € 3,-, members of guilds: voluntary donation

10% discount for the entrance



The Museum was found 2005 by Alois Penz, who was the president of the BÖF and the vice president of the Närr, Europ, Gemeinschaft. Now it has arrived at its third location in the city centre of Knittelfeld. Here you will find all kinds of things to do with carnival, carnival and Fasnacht.

Marktgasse 22a, 8720 Knittelfeld, tel.: +43 664 1417865,
+43 (0)664 3443465, kurt.peter.jermann@gmail.com

BOWLING IN OBDACH - GASTHOF GRILLITSCH**80****Opening times:** Daily 10 a.m. to midnight, closed Wednesday**Admission:** 1-hour lane hire €14.00

Discounted price € 10,-

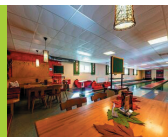
30 % off the lane price

Kill some time bowling at the Gasthaus Grillitsch-Rösslwirt in winter too. There are three fully equipped lanes available. The inn will keep you refreshed with a range of drinks and house dishes. Why not try our "Keglertoast" (bowling toast)!

Hauptstraße 39, 8742 Obdach, tel.: +43 3578 2225
info@roesslwirt.at

STEINBERGER BOWLING LANES**81****Opening times:** Wednesday to Saturday from 2 p.m.

Booking preferred.

Prices: Per bowling lane/hour €9.00**10 % off bowling**

You don't have to be an expert bowler to enjoy an entertaining game. Families, friends, clubs and companies love coming to our lanes for a social afternoon or evening. Our three fully automatic lanes offer fun, sport and entertainment for those hoping to "strike" it lucky.

Weißkirchner Straße 7, 8734 Lobmingtal, tel.: +43 664 1241179
kegelbahnen.steinberger@ainet.at

TOPSI KEGELBAHNEN**82****Opening times:** Monday to Friday from 10 a.m. to tired!
Saturday and public holidays to tired, closed Sun**30 % discount off bowling**

This interactive bowling alley – complete with black light, murals, ceiling art, and sound effects – will whisk you away into a different world. Challenge your friends to a game of table football or darts, or simply enjoy a coffee or an evening beer at the bar.

Gußstahlwerkstraße 30, 8750 Judenburg, tel.: +43 664 3125200
topsi-kegelbahnen.jimdosite.com

BOWLING & PADEL TENNIS AT THE WILHELMER**83****Opening times:** Monday to Saturday 10 a.m. to midnight and Sunday 10 a.m. to 8 p.m., hot food Monday to Saturday 10 a.m. to 2 p.m. and 6 p.m. to 10 p.m. and Sunday 10 a.m. to 7 p.m.**10 % off bowling & padel tennis**

We have four bowling alleys for you to enjoy – even under the moonlight. Guaranteed fun for the whole family. Our traditional family-run company is known for its gastronomy as well as for its range of sports and wellness treatments. The array of culinary offers will surpass all expectations.

Bundesstraße 19, 8753 Aichdorf, tel.: +43 3577 22631
www.wilhelmer.net

FOR ALL THOSE LOOKING FORWARD TO SUMMER AGAIN

Servus Magazine MUR TAL is pleased to showcase the Green Jewel of Styria in all its beauty. Discover secret spots brimming with natural wonders, and get to know the local artisans and the ins and outs of their craft. Immerse yourself in the diversity of regional customs and enjoy culinary highlights ranging from Murtal Styrian cheese soup to haute cuisine fish dishes.



This travel guide accompanies you through a year in the Murtal. From the blossoming heather to the alpine rose; from historical highlights to the world's most state-of-the-art race circuit. From relaxing moments of wellbeing at the spa to adrenaline-charged driving experiences in which you will surely "feel your heart beat".

GET YOUR FREE
HIKING MAPS
murtal.at/prospekte



CYCLING MAPS AND FAMILY GEMS



ACCOMMODATIONS





New! **FUN** TASTIC
SLOPE

Your ski area in the
Murtal - family-friendly,
ideal for kids,
guaranteed snow



www.gaalerlifte.at | 0664 1417858

FOR FAMILIES, TOUR GROUPS, CLUBS, SCHOOLS, YOUNG & OLD
THE SHINING ATTRACTION OF THE MURLAL:
THE WORLD OF *PRECIOUS* STONES



*T*HE GLITTERING
CRYSTAL COLLECTION



*J*EWELLERY WORKSHOP



EDELSTEINE
KRAMPL



*T*RANSSPARENT FACTORY



*S*TONE SCULPTING

**GUIDED TOUR OF THE 'TRANSPARENT FACTORY' &
GLITTERING CRYSTAL COLLECTION**

Current admission prices and additional information can be
found at www.edelsteine-krampl.com

**Of course, a visit to our sales
floor is free.**

**Children, school pupils and registered tour groups
receive a lucky stone on their visit.**

ACTIVITIES:

Soapstone carving, crafting gemstone trees, threading
bracelets with stone chips. Workshops for sculpting &
goldsmithing, forge your own wedding ring & ceramic workshops.

Webpage: edelsteine-krampl.com

Facebook & Instagram: [edelsteine.krampl](https://www.facebook.com/edelsteine.krampl)

Opening times:

Monday to Friday: 9.00 a.m. to 6.00 p.m. | Saturday: 9.00 a.m. to 12.00 p.m.

Edelsteine Krampl Handels Ges. m. b.H. | Bahnhofstraße 7 | 8741 Weißkirchen
Tel.: 03577/81111 | info@edelsteine-krampl.com | www.edelsteine-krampl.com